

AchValidator: Your ACH support tool

ACH Validation

NACHA Rules are updated annually. Our internal validation rules are similarly updated to ensure that all appropriate record and field level validations are applied.

All Standard Entry Classes are Supported

- ACK, ADV, ARC
- ATX, BOC, CCD
- CIE, COR, CTX
- DNE, ENR, IAT
- MTE, PPD, POP
- POS, SHR, RCK
- TEL, TRC, TRX
- WEB, XCK

Item Viewer

- Records viewer
- Field viewer
- Hex viewer

Capabilities

- Browse
- Validate
- Modify
- Find/Filter
- Search/Replace
- Report/Print
- Repair
- Export
- Merge

Reporting

- Summaries
- Errors
- Export to Excel

Licensing

- Single user
- Solution Pack (5 seats)
- Unlimited

AchValidator builds on our X9Vision product with additional tools to validate the content of ACH files per industry standards. AchValidator provides functions which allow you to modify the contents of ACH data fields. Export capabilities allow data within the ACH file to be exported to external files in several common formats. Merge allows multiple files to be consolidated into a single file.

AchValidator is applicable to all users of the ACH file formats that need file validation functionality to determine if their files meet specific industry standards. This includes financial institutions, corporate users, and third party processors.

AchValidator provides support functions which will Validate, Modify, Filter, Repair, Export, Merge, and Report against your NACHA formatted files. Validate is a very powerful tool which applies appropriate validation rules at the record and field levels, per established ACH industry standards. Errors are identified and summarized based on severity and frequency.

Do you use ACH files on a regular basis? You should evaluate **AchAssist** and experience the full range of functionality offered by our most extensive ACH desktop application.

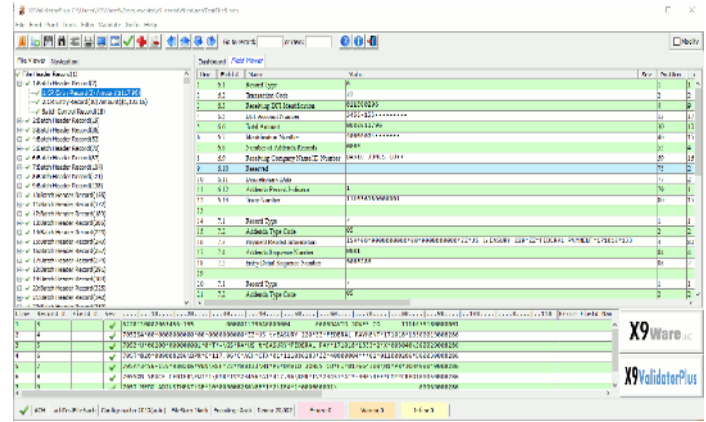
Validation is applied to all ACH data content. Transactions types (debits versus credits) will be validated as appropriate for the current entry class. Returns are validated as being present in the correct entry classes. Addenda records are validated to be present (when needed) and to not exceed maximum allowable counts. Trailer totals are validated against actual data content which is present. All validation rules are completely configurable and extendable through XML definition files.

Modify allows data within individual ACH record fields to be assigned new values. All ACH validations are applied within the editor as individual fields are modified. The delete function can be used to remove single records, groups of records, or entire bundles. Images can be replaced with customizable "missing image" documents. Trailer record totals are automatically adjusted from newly entered values. A modification log is maintained which can be used to review and revert. Modified data can be saved to a new ACH file once all revisions have been confirmed. The modification log can be exported.

Filters can be constructed from the results of find operations and used to select specific records to be saved into a new file. Filters from multiple find actions can be consolidated and edited.

Search provides string level search and replace functions at a record and field level. Changes are logged and can be individually reverted.

Repair applies automated repair actions against an ACH file that has "issues". Automated repair corrects many of the common data and image errors that are found within ACH files. Repair can be broad based to an entire file, restricted to specific ACH record



types, or can be targeted and limited to specific fields. The automated repair actions have been carefully designed to maintain the original financial content of the file and only change technical data tags where the originators intent can be clearly determined.

Export allows data to be easily exported in an external format such as CSV, raw text, or XML. Exported files can be analyzed by your internal tools or used as the basis to allow the data to be reformatted and routed to your back end systems. The same philosophy applies to the ability to export images to external files and folders.

Merge allows multiple ACH files to be merged into a new file which can then be validated and saved. Merge is extremely useful when you have multiple ACH files which were created independently and must now be consolidated. Merge can process on a cash letter or bundle basis. You can select a large number of files by putting them into a single folder and using CTRL-A to select them into a merge operation.

Print allows our standard text reports to be generated, viewed, and printed. Both summary and detail reports can be created, including record types and validation errors. You can also print the log of all changes made through Modify. Reports are generated in HTML format for easy exchange.

Excel Exporter will export our standard reports directly to MS-Excel (or similar tools). This is a great facility to share your results. Once exported to Excel, results can be sorted, further analyzed, or printed.

Please visit our website at x9ware.com, or send inquiries to sales@x9ware.com. We have the ACH and ach experience to meet your specific business needs.